

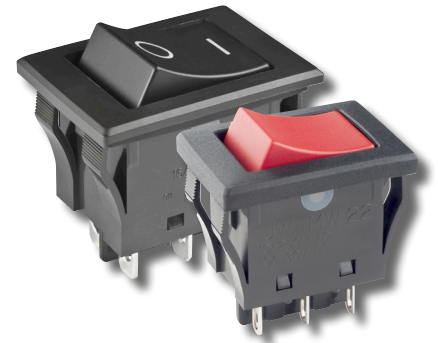
# Change Notice

# JW Series

## Changes to Material of Caps & Case/Base for JWMW & JWLW Rockers

Type of Change:

- Engineering     Part Number
- Product         Appearance



**Changes to Material of Caps and Case/Base for JWMW and JWLW models**

I. There will be a revision to the material of the rocker cap and the case/base for JW Series Rocker Switches, the JWMW and JWLW models only. The cap material, formerly polyphenylene ether (PPE), will be revised to polyamide. The case and base material of melamine resin will change to melamine phenol resin. This change will apply to all JWMW and JWLW standard and custom switches. Effected standard part numbers are listed on the table below.

JWMW & JWLW Models	Before Change	After Change
Cap Material	Polyphenylene ether (PPE)	Polyamide
Case/Base Material	Melamine Resin	Melamine Phenol Resin

**Notes**

There are no changes to any of the switches' mechanical functionality, specifications or dimensions. Contact information is below if more details are needed.

Effected Standard Part Numbers for Series JW Rockers					
JWMW Models				JWLW Models	
JWMW11RAA	JWMW21RA1A	JWMW11RCA	JWMW21RC1A	JWLW21RAA	JWLW21RCA
JWMW21RAA	JWMW21RA2A	JWMW21RCA	JWMW21RC2A	JWLW21RA1A	JWLW21RC1A
JWMW11RA1A	JWMW12RAA	JWMW11RC1A	JWMW12RCA	JWLW21RA2A	JWLW21RC2A
JWMW11RA2A	JWMW22RAA	JWMW11RC2A	JWMW22RCA	JWLW22RAA	JWLW22RCA

**Effective Date**

Changes in material of the caps and cases/bases for JWMW and JWLW Rockers will be effective October 2024. However, the end of sales date may be subject to change depending on inventory of parts.

**NKK SWITCHES HONG KONG CO., LTD.**

Rm. 601, Fook Yip Building, 53-57 Kwai Fung Crescent, Kwai Chung, N.T., Hong Kong.  
 Tel.: (852)2366-6634 Fax.: (852)2366-6803 www.nkkswitches.com.hk E-mail: info@nkkswitches.com.hk

**NKK SWITCHES CHINA CO., LTD.**

Rm. 702, Center Tower, Huaning Plaza, 300 Xuanhua Rd., Changning, Shanghai China  
 Tel.: (86)21-62496574 Fax.: (86)21-62483375 www.nkkswitches.com.cn E-mail: info@nkkswitches.com.cn

# Change Notice

# JW Series

## Changes to Identification on Switch Housing for JWMW & JWLW Rockers

Type of Change:

- Engineering
- Part Number
- Product
- Appearance

2. Sides of the switch housing for JWMW and JWLW models of the JW Series will reflect changes in identification, including an updated NKK Switches logo when applicable. The cULus logo will remain, and the UL standard will change from UL 1054 to UL 61058-1. As shown on the *Before* and *After* illustrations below, the ratings and certifications may be arranged differently on the case. These revisions will apply to JWMW and JWLW standard and custom JW Series switches. Effected standard part numbers are the same as for Change 1, listed on page 1.

JW Series	Changes to Methods of Identification			
	Before Change	After Change	Before Change	After Change
	Older NKK Logo	Updated NKK Logo	Certifications & Ratings	Certifications & Ratings
JWMW Rockers	Example: JWMW11RAA		Example: JWMW11RAA	
JWLW Rockers	Example: JWLW21RAA		Example: JWLW21RAA	

**Notes**

There are no changes to any of the switches' mechanical functionality, specifications or dimensions. Contact information is below if more details are needed.

**Effective Date**

Changes in identification on housing of JWMW and JWLW models will be effective October 2024. However, the end of sales date may be subject to change depending on inventory of parts.

**NKK SWITCHES HONG KONG CO., LTD.**

Rm. 601, Fook Yip Building, 53-57 Kwai Fung Crescent, Kwai Chung, N.T., Hong Kong.  
Tel.: (852)2366-6634 Fax: (852)2366-6803 www.nkkswitches.com.hk E-mail: info@nkkswitches.com.hk

**NKK SWITCHES CHINA CO., LTD.**

Rm. 702, Center Tower, Huaning Plaza, 300 Xuanhua Rd., Changning, Shanghai China  
Tel.: (86)21-62496574 Fax: (86)21-62483375 www.nkkswitches.com.cn E-mail: info@nkkswitches.com.cn